

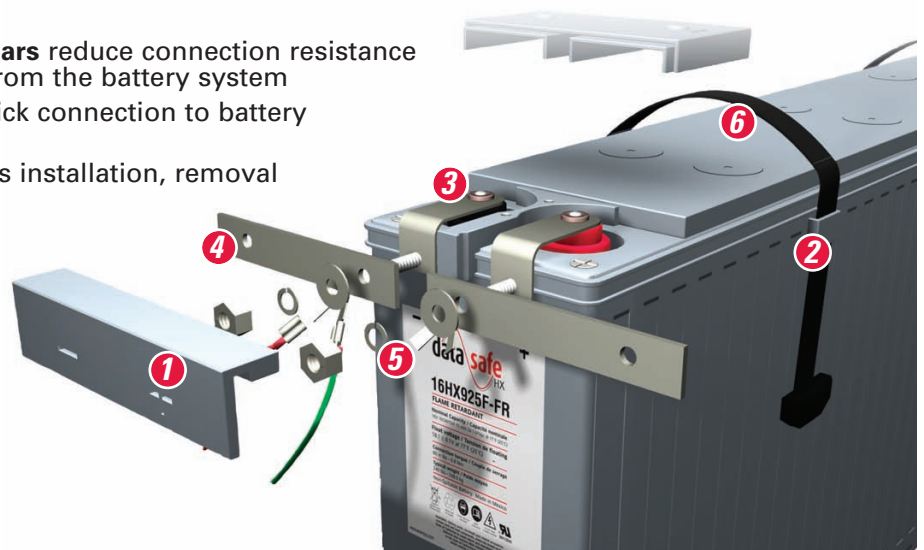


16VOLT FRONT
TERMINAL BATTERY
CABINETS



Features & Benefits

1. **Insulating covers** with voltmeter probe access enhance safety and simplify maintenance
2. **Integrated handle support** doubles as an automatic spacer between units to enhance airflow and thermal management
3. **Nord-Lock® Washer** provides a secure terminal connection over the life of the battery
4. **Solid tin-plated copper busbars** reduce connection resistance to enhance power delivery from the battery system
5. **Dual-tab washer** enables quick connection to battery monitoring systems
6. **Nylon strap handle** simplifies installation, removal and replacement





- 16Volt Front Terminal Battery Systems have Energy Density Advantage over 12Volt Battery Systems
- Lower Maintenance Costs
- Front Terminal Access
- Less Connections Per 480 Volts
16Volt = 30 Connections
12Volt = 40 Connections

Certifications

- UL and cUL (Canadian UL) listed
- International Building Code 2006 Certified
- California Building Code 2007 Certified
- California Office of Statewide Health Planning and Development Certified (OSHPD)

Constant Power Discharge Rates - 480V System kW at 25°C (77°F) to 1.67 VPC

DataSafe® 16HX-FT battery	Strings	Standby Time (Minutes)							
		5	10	15	20	25	30	45	60
16HX550F	1	212	163	132	108	91	79	57	45
	2	424	326	264	217	183	159	115	91
	3	636	489	396	325	275	239	173	137
	4	848	653	528	434	366	318	231	182
	5	1061	816	660	542	458	398	289	228
16HX800F	1	285	235	192	162	140	123	90	72
	2	571	470	384	323	279	246	180	144
	3	857	706	576	485	420	370	272	216
	4	1143	941	768	647	560	494	362	288
	5	1429	1177	960	809	700	617	453	360
16HX925F	1	314	271	222	182	155	136	99	79
	2	628	543	444	365	311	273	189	158
	3	942	816	666	548	467	410	299	237
	4	1256	1087	888	731	622	546	399	316
	5	1570	1359	1110	914	778	683	499	396

NOTE: Weight dimensions and system number represents one 480V string per cabinet and top terminated breaker (grey cabinet color)

16V System Number	KWB**	Run Time @ 77°F to 1.67 Vpc	System Voltage	Strings (Cabinets)	L	Inches D Per Cabinet	H	System Square Feet Per Cabinet	System Weight lbs Per Cabinet
16HX550F									
ST65550480B0400*	213	20	480	2	64	34	84	15.1	10,500
ST65550480B0250*	213	34	480	3	96	34	84	22.7	15,750
ST65550480B0250*	213	49	480	4	128	34	84	30.2	21,000
16HX800F									
ST65800480B0800*	213	12	480	1	50	34	84	11.8	8,500
ST65800480B0400*	213	36	480	2	100	34	84	23.6	17,000
ST65800480B0250*	213	61	480	3	150	34	84	35.4	25,500
16HX925F									
ST65925480B0800*	213	16	480	1	50	34	84	11.8	8,960
ST65925480B0400*	213	41	480	2	100	34	84	23.6	17,920
ST65925480B0250*	213	68	480	3	150	34	84	35.4	26,880
16HX800F									
ST65800480B0800*	474	9	480	2	100	34	84	23.6	17,000
ST65800480B0600*	474	20	480	3	150	34	84	35.4	25,500
ST65800480B0400*	474	31	480	4	200	34	84	47.2	34,000
ST65800480B0400*	474	42	480	5	250	34	84	59.0	42,500
16HX925F									
ST65925480B0800*	474	13	480	2	100	34	84	23.6	17,920
ST65925480B0600*	474	24	480	3	150	34	84	35.4	26,880
ST65925480B0400*	474	36	480	4	200	34	84	47.2	35,840
ST65925480B0400*	474	48	480	5	250	34	84	59.0	44,800
16HX800F									
ST65800480B0800*	711	9	480	3	150	34	84	35.4	25,500
ST65800480B0600*	711	17	480	4	200	34	84	47.2	34,000
ST65800480B0600*	711	24	480	5	250	34	84	59.0	42,500
16HX925F									
ST65925480B0800*	711	13	480	3	150	34	84	35.4	26,880
ST65925480B0600*	711	20	480	4	200	34	84	47.2	35,840
ST65925480B0600*	711	28	480	5	250	34	84	59.0	44,800
16HX800F									
ST65800480B0800*	758	8	480	3	150	34	84	35.4	25,500
ST65800480B0600*	758	15	480	4	200	34	84	47.2	34,000
ST65800480B0600*	758	22	480	5	250	34	84	59.0	42,500
16HX925F									
ST65925480B0800*	758	11	480	3	150	34	84	35.4	26,880
ST65925480B0600*	758	19	480	4	200	34	84	47.2	35,840
ST65925480B0600*	758	25	480	5	250	34	84	59.0	44,800
16HX800F									
ST65800480B0800*	947	9	480	4	200	34	84	47.2	34,000
ST65800480B0600*	947	15	480	5	250	34	84	59.0	42,500
16HX925F									
ST65925480B0600*	947	13	480	4	200	34	84	47.2	35,840
ST65925480B0600*	947	19	480	5	250	34	84	59.0	44,800
16HX800F									
ST65800480B0800*	1042	7	480	4	200	34	84	47.2	34,000
ST65800480B0800*	1042	12	480	5	250	34	84	59.0	42,500
16HX925F									
ST65925480B0800*	1042	10	480	4	200	34	84	47.2	35,840
ST65925480B0800*	1042	16	480	5	250	34	84	59.0	44,800

* Breaker Options Include (add appropriate letter at the end of the system number for proper breaker option)

A = 24 VDC Shunt Trip and Dual Aux Contacts
 B = 48 VDC Shunt Trip and Dual Aux Contacts
 C = 24 UVR and Dual Aux Contacts
 D = 48 UVR and Dual Aux Contacts

E = 250V Shunt Trip
 F = Aux Contact
 G = 220V Shunt Trip

** KWB is based on 90% Power Factor and 95% Efficiency

Ordering Guide

Cabinet System Order Code:

ST - 6 - 5 - 925 - 480 - B0800 - A

Breaker Location and Cabinet Color	Number of Blocs Wide	Number of Blocs/Shelves High	Cell Model	System Voltage	Breaker Size	Breaker Options
ST = Top Breaker, Grey SA = Top Breaker, Black SS = Side Breaker, Grey SB = Side Breaker, Black	6	4	550 = 16HX550F 800 = 16HX800F 925 = 16HX925F	384 = 384V 480 = 480V	B0250 = 250 Amp B0400 = 400 Amp B0600 = 600 Amp B0800 = 800 Amp B0A00 = 1000 Amp	A = 24 VDC Shunt Trip and Dual Aux. Contacts B = 48 VDC Shunt Trip and Dual Aux. Contacts C = 24 UVR and Dual Aux Contacts D = 48 UVR and Dual Aux Contacts E = 250V Shunt Trip F = Aux. Contact G = 220V Shunt Trip

Example: ST65925480B0800A

ST Cabinet System, Top Mounted Breaker, Grey color
 6 6 Blocs Wide
 5 5 Blocks/Shelves High
 925 16HX925F
 480 480V
 B0800 800 Amp Breaker
 A 24 VDC Shunt Trip and Dual Aux. Contacts

Cabinet Dimensions:

	Breaker Location	Bloc Wide	Bloc High	16HX800F & 16HX925F			16HX550F		
				Width	Depth	Height	Width	Depth	Height
ST64 SA64	Top	6	4	50.0" *	34.0"	72.0"	32.0"	34.0"	72.0"
ST65 SA65	Top	6	5	50.0" *	34.0"	84.0"	32.0"	34.0"	84.0"
SS64 SB64	Side	6	4	60.5" *	34.0"	72.0"	42.5"	34.0"	72.0"
SS65 SB65	Side	6	5	60.5" *	34.0"	84.0"	42.5"	34.0"	84.0"

* Configuration consists of 2 cabinets placed side-by-side due to weight restrictions.

For other system configurations, please contact your local EnerSys representative.

1-800-538-3627

www.savebatteryspace.com

US-16VFTCAB-FL January 2011

© 2010 EnerSys. All rights reserved.

Trademarks and logos are the property of EnerSys and its affiliates, except Nord-Lock®, which is not the property of EnerSys. Subject to revisions without prior notice. E.&O.E.



ENERSYS WORLD HEADQUARTERS
 P.O. Box 14145
 Reading, PA 19612
 Phone: 800-538-3627
 Fax: 610-372-8613
www.enersys.com

ENERSYS CANADA INC.
 61 Parr Boulevard Unit 3
 Bolton, Ontario • Canada L7E 4E3
 Phone: 800-363-4877
 Fax: 905-951-4441

ENERSYS DE MEXICO SA DE CV
 Ave Lopez Mateos #4210
 Colonia Casa Blanca • C.P. 66475
 San Nicolas de los Garza, N.L. Mexico
 Phone: 011-52-818-329-6400
 Fax: 011-52-818-329-6489