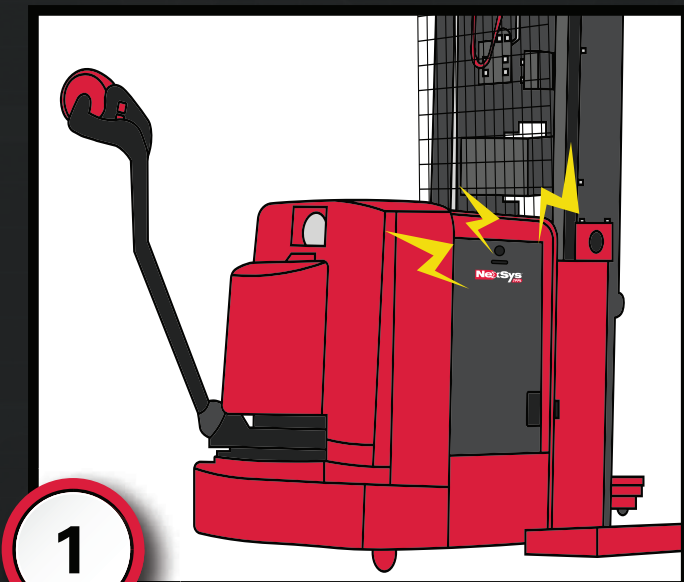
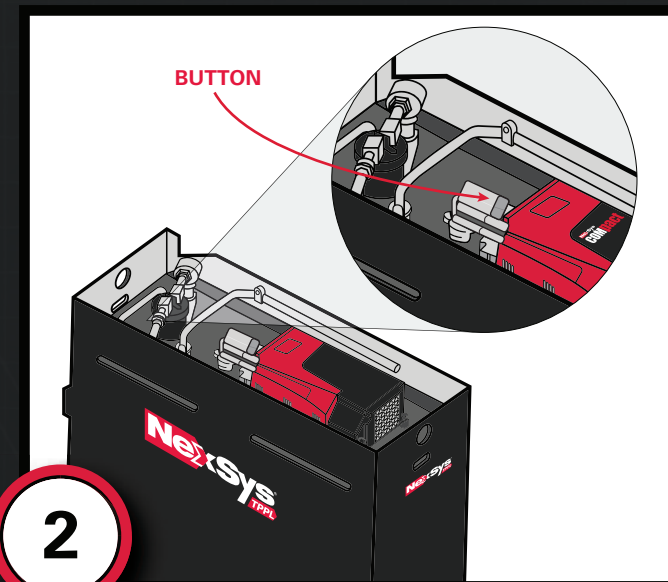


COMpact ON-BOARD CHARGING PROCEDURE



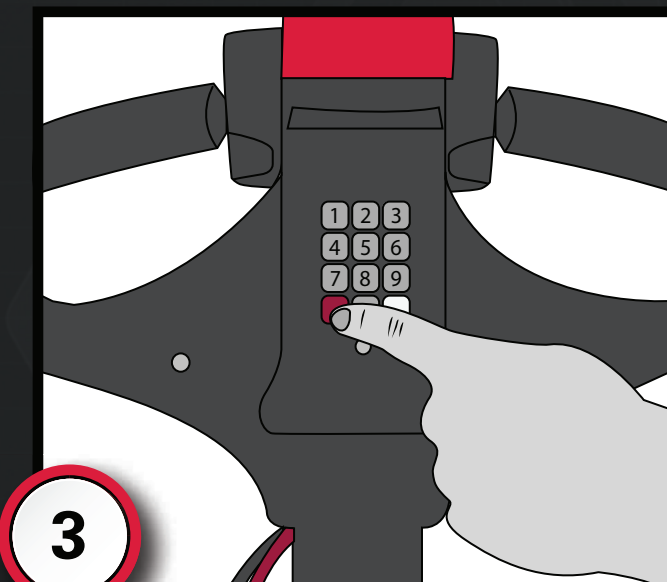
1

When the buzzer sounds, the battery must be recharged.



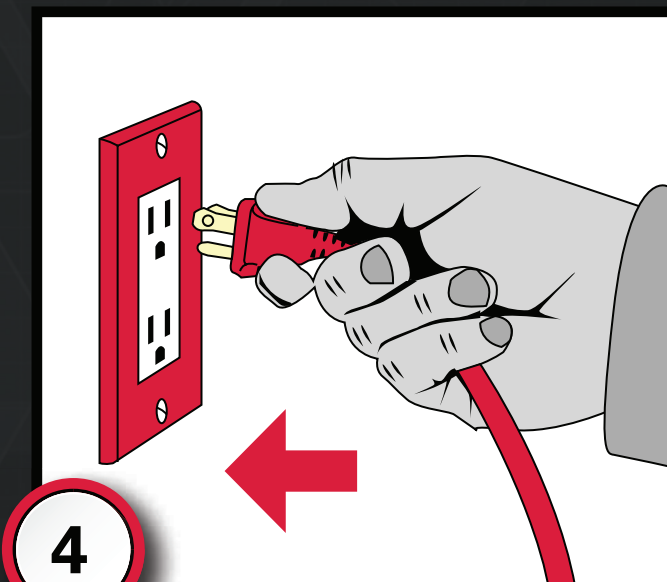
2

In order to recharge, locate the activation button (next to the contactor shown above) and press ONCE to re-activate the battery.



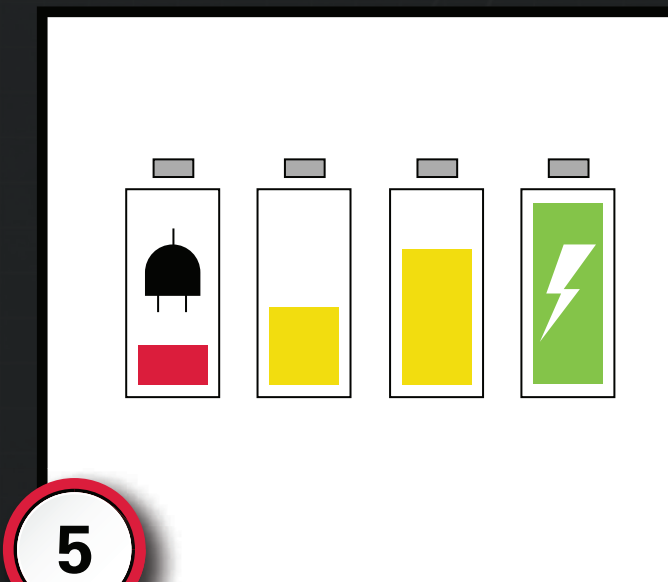
3

Turn off the pallet truck.



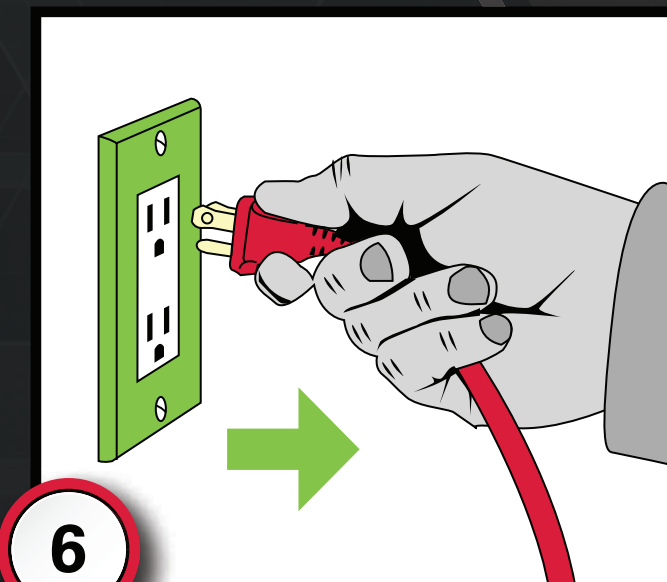
4

Plug in the AC cord. Power to the vehicle will be disconnected automatically during recharging.



5

Recharge will begin automatically with no further effort required.



6

When recharging is complete, unplug the AC cord and turn on the pallet truck.

OPERATION

Normal operating temperature is 25°C (77°F). The acceptable operating temperature range for this battery is between 0C (32°F) and 45C (113°F).

For optimum lifetime of the battery, maintain operating temperatures between 20-30°C and ensure the battery is discharged equal to or less than 60% of its nominal capacity.

GENERAL MAINTENANCE

Check the condition of the plugs and cables and verify that all insulation covers are in place and are in good condition.

AC cord should be stowed away when not in use.

Battery should always be kept clean and dry. Any liquid in the battery tray must be extracted and disposed.

A battery is electrically live at all times. Do not lay metal objects on a battery.

Only authorized EnerSys® Service Representatives may service a NexSys® COMpact onboard charger.

DISCHARGE

DO NOT OVERDISCHARGE. Discharging the battery beyond 80% capacity is categorized as deep discharges and will significantly reduce the lifetime of the battery and void product warranty. DO NOT LEAVE BATTERY IN A DISCHARGED CONDITION. After every discharge, immediately recharge the battery.

When the State of Charge (SoC) of the battery reaches 40% of capacity, the battery buzzer will transmit a beeping sound indicating that the battery needs to be recharged. Plug the battery in immediately to begin charging.

RECHARGE

The NexSys® COMpact onboard solution is optimized for opportunity charging. Plug the battery in whenever not in use. This will keep the battery at an optimal state of charge and ready to use, in addition to maximizing battery product life.

For detailed operating instructions and safety precautions, please refer to the manual provided with the battery or charger.

